



Public Health
England

Protecting and improving the nation's health

“So what does PHE do?”

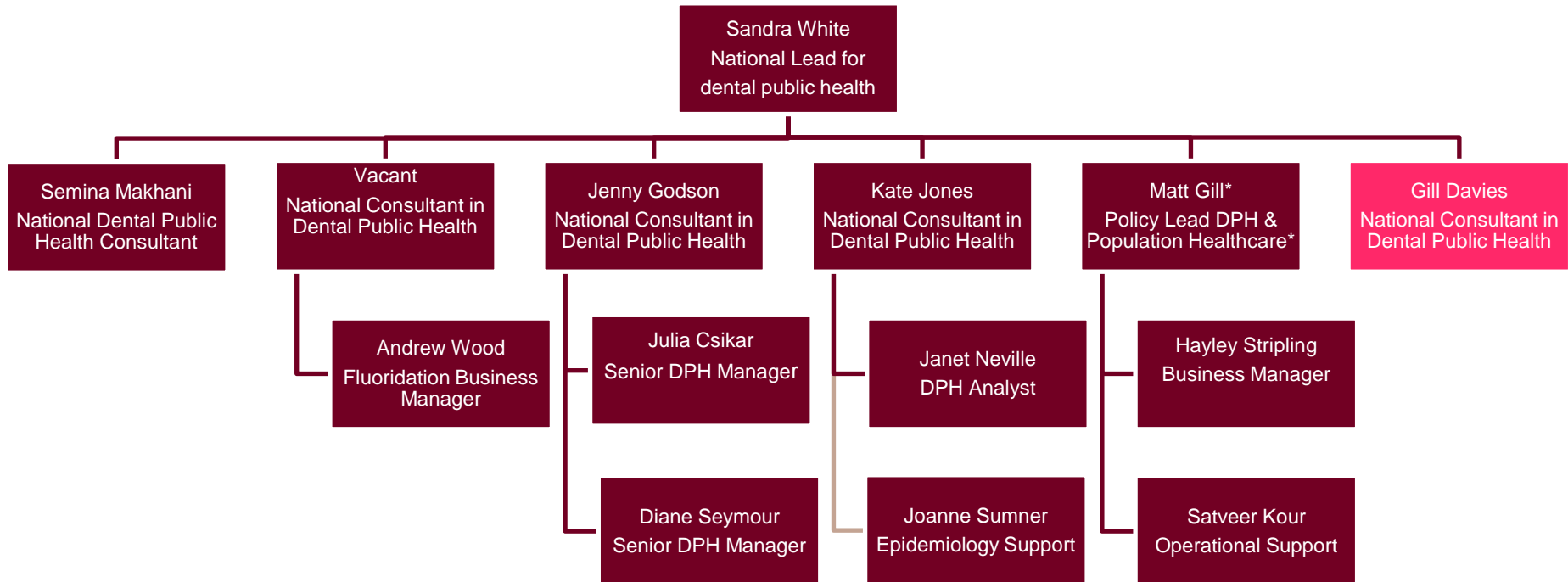
Sandra White BDS, FDSRCS, MPH, FDS(DPH)RCS, FFPS, MBA, PGCMedEd

Summary

- Who we are and where are we?
- Vision to delivery
- Story so far
- What's next?

- Who we are and where are we?
- Vision to delivery
- Story so far
- What's next

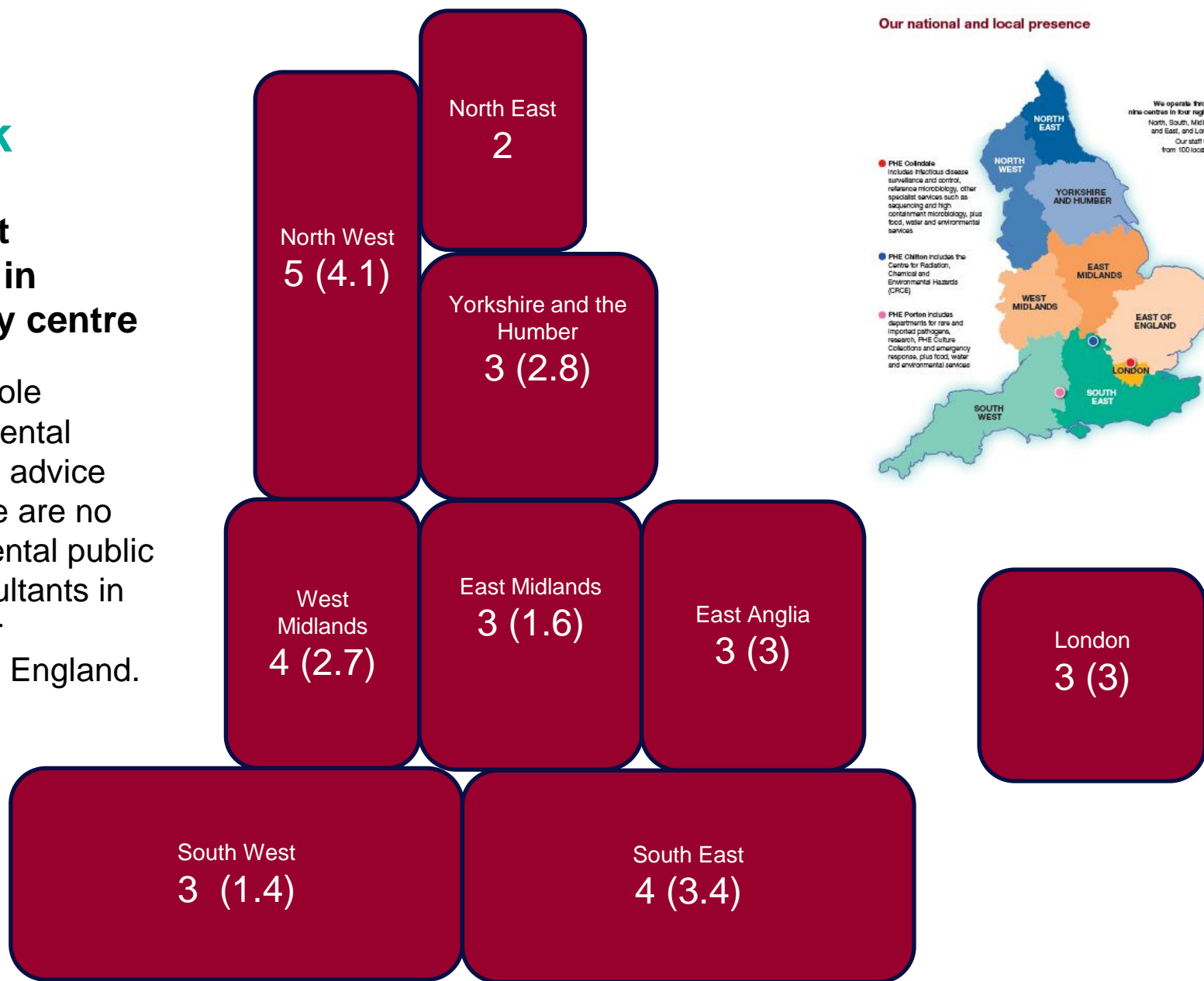
National team



Centre Network

Consultant workforce in England by centre

PHE is the sole provider of dental public health advice locally. There are no dedicated dental public health Consultants in LA, CCGs or elsewhere in England.





How we work....



- Who we are and where
- **Vision to delivery**
- Story so far
- What's next

A national 5 year plan 2015-2020

We protect and improve the nations health and wellbeing and reduce inequalities

**Our
vision**

Starting well
A generation free
of
dental disease

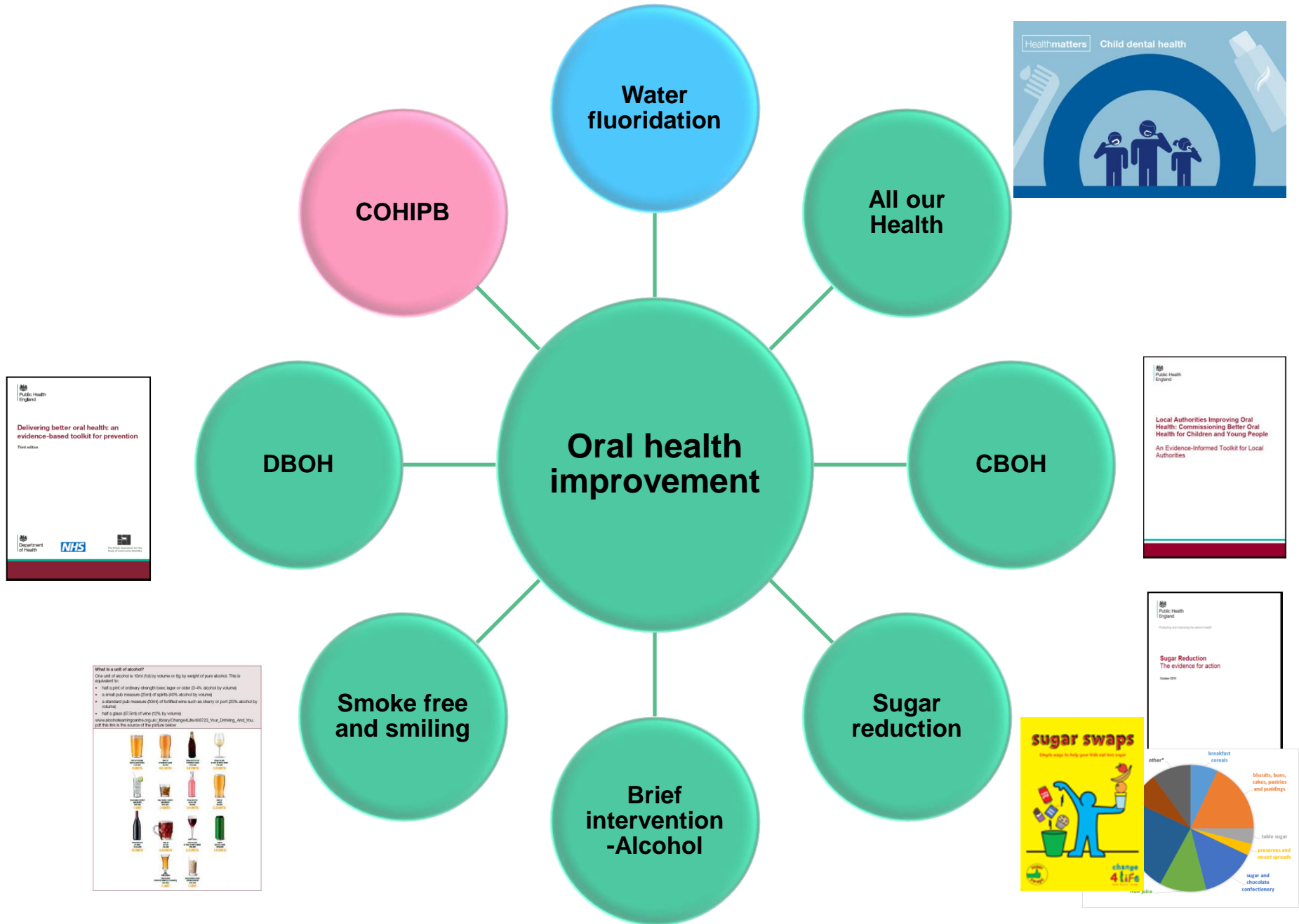
Living well
Better oral health
for all

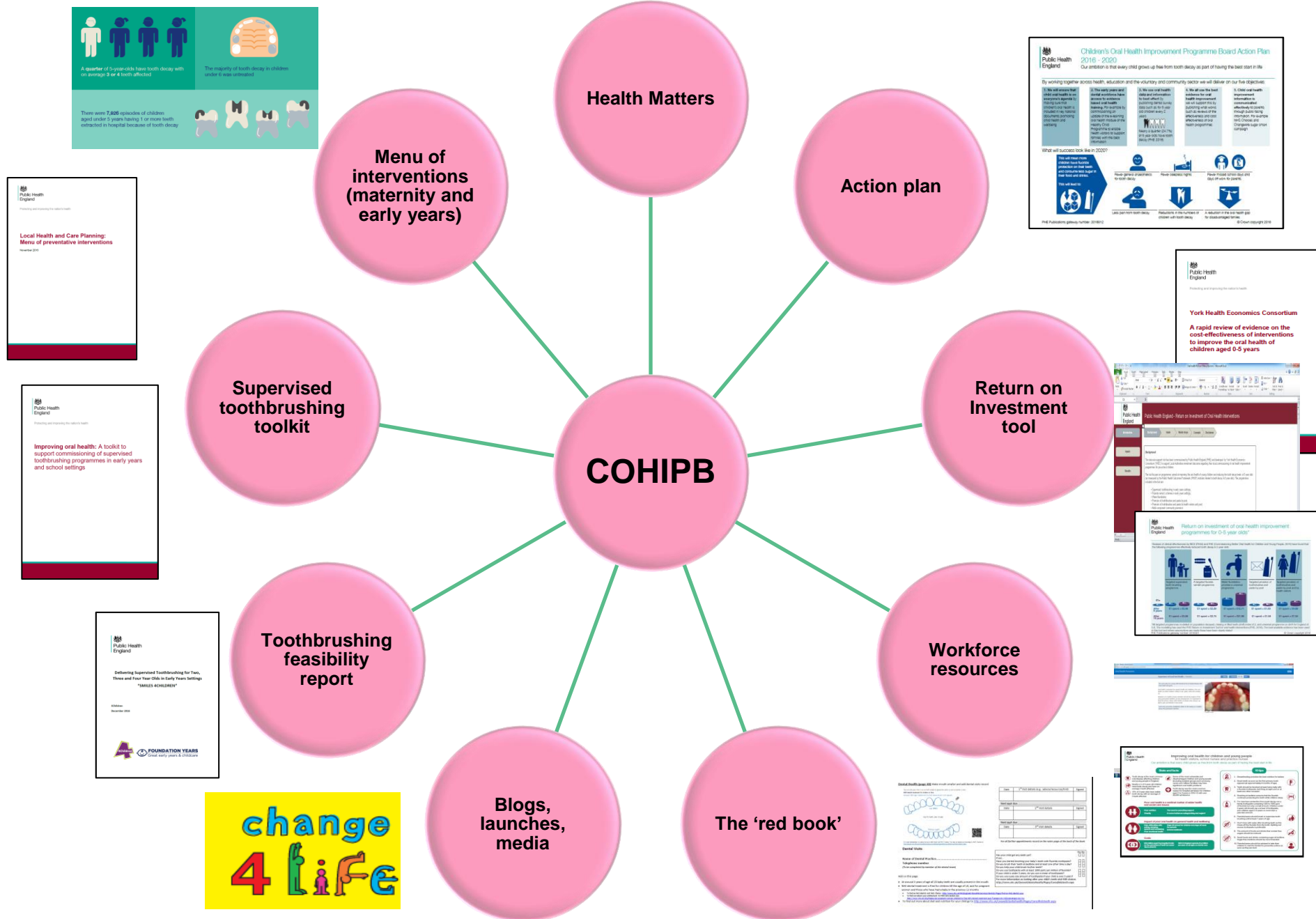
**System
support**
our
organisation,
our workforce,
our partners

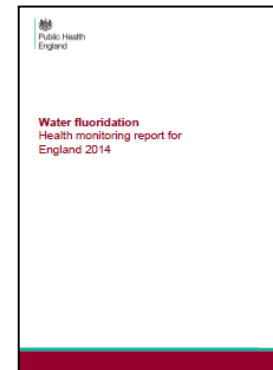
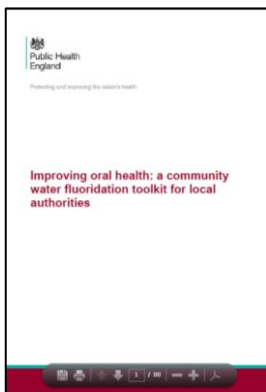
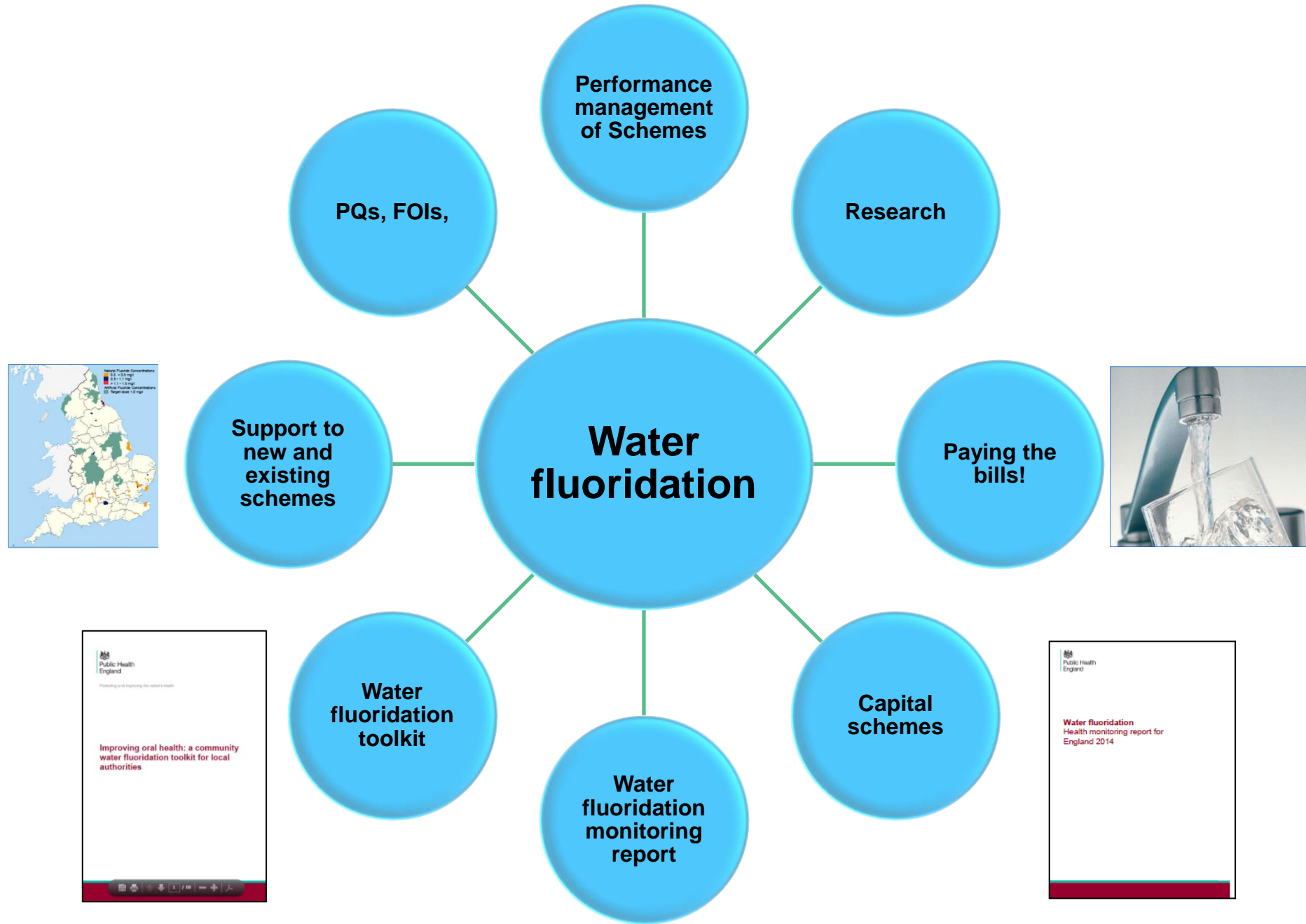
High Level objectives

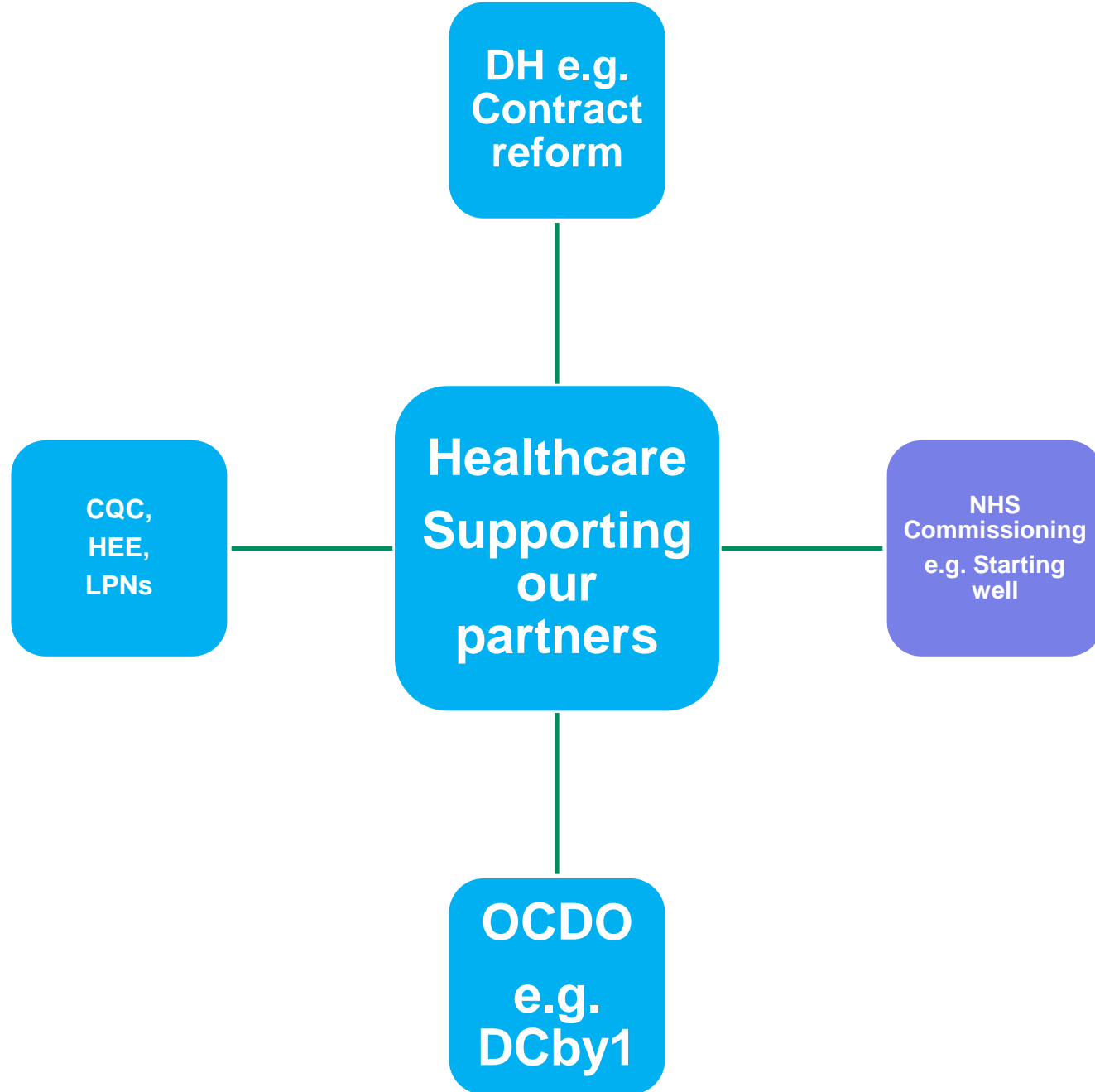
1. System leadership to co-ordinate the approach to **oral health improvement and reduction in health inequalities**, particularly through a focus on children and vulnerable adults.
2. Ensure that an appropriate range of **evidence based information** is available for dental public health purposes and for a range of stakeholders including the findings from the dental epidemiology programme and descriptions on inequalities
3. Carry out **PHE's water fluoridation** responsibilities and those responsibilities carried out on behalf of the SoS and ensure adequate support to our workforce and partners.
4. Support the **health protection role** of PHE including the AMS agenda.
5. **Support** the work of the DH, NHS England and HEE to encourage high quality, safe and effective oral healthcare that is preventive focused, equitable and sustainable
6. Ensure professional and system leadership and **research** for dental public health, develop the future workforce and undertake corporate responsibilities

- Who we are and where are we?
- Vision to delivery
- Story so far
- What's next



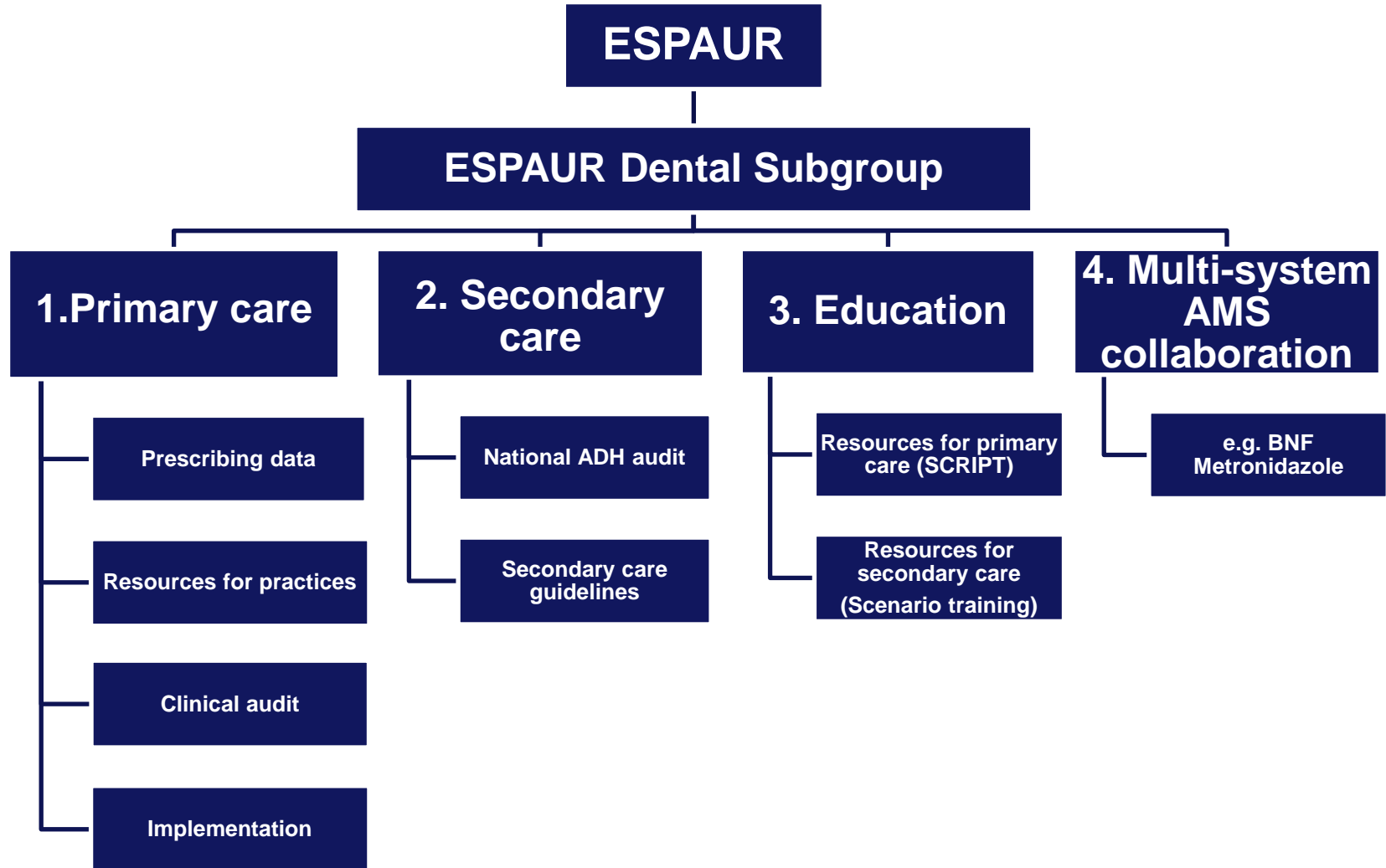








Health protection e.g. AMS



Research

- Relationships between oral health and
 - Dementia
 - Cardiovascular disease
 - Pulmonary disease
 - Diabetes
 - Obesity
- Oral health of vulnerable adults (CBOH)
- Water fluoridation – fluorosis and horizon scanning

Working towards>>>>

- Workforce – wellbeing of GDPs
- ICDAS and child surveys
- Multivariate analysis and child dental health surveys
- GAs – variety of research!

- Who we are and where are we?
- Vision to delivery
- Story so far
- What's next?

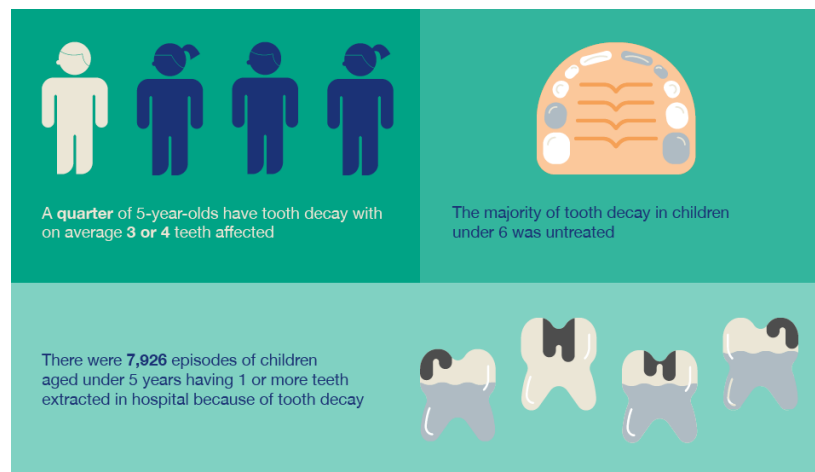


Public Health
England

Further work of the COHIPB

Ongoing delivery plan 2017/18

- Community based FV toolkit- PHE
- Update e-den DBOH- PHE/RCS/HEE
- Work to increase FV Rx- NHSE
- Support -DcBy1- NHSE/BSPD
- Support - Starting Well- NHSE
- Support Health for all children 4th Ed - RCPCH
- SACN – breastfeeding and tooth decay
- Best Beginnings – Baby Buddy app
- LA hotspots- identifying 30 where challenges remain
- Further work with Change4life



What is being done on a local level?

Across England, LAs are trying different evidence-based approaches to best meet the specific needs of their population.

There are several LAs funding water fluoridation schemes, benefiting around 5 million people across England. We know 5-year-olds are 28% less likely to have dental decay and there are 55% fewer hospital admissions for dental

Other oral health improvement work

- Stocktake LA's on OHI
- Smoke free and smiling – update and implementation
- Commissioning better oral health – vulnerable older people
- Development of a vulnerable adult steering group and actions
 - Work on homelessness / dementia / prisons (survey) / migrant health

Support to partners Healthcare Public Health

BSA data

- Complimentary dashboard on access to and use of dental service
- Report on equity of access to dental services
- **Starting well**
 - Interventions and prevention care pathway
 - Training for the dental teams
 - Data and evaluation
- **Health inequalities report**
- **Supporting dental contract reform**
- **Sustainability**
- **Dental noticeboard**
- **Recall Matters**
- **Patient and public engagement**

Epidemiology and intelligence.

- oral cancer profiles
- decennial adult dental health survey – the case
- prescribing data at provider level
- new website
- mildly dependant adults survey
- 5 year old survey
- **A survey of adult oral health to provide local information to assist with commissioning 2017/2018 Survey**

Aims of survey of adults

- To inform commissioning of treatment services for adult patients and oral health improvement strategies by collecting information about oral health and service use from adult patients attending general dental practice
- To establish baseline learning about the feasibility of collecting information from general dental practice patients and assess the validity and utility of this.

Plans for a local survey of adults

Planning group with NHSE, LDNs, BDA, GDPA, LAs, fieldwork provider, FGDP

Developing - principles to guide the survey,
workable method – national protocol
and communications strategy

Regional training

Random sample of 10 practices per local authority– NHS, mixed, independent.

Fieldwork teams contact sampled practices and ask them to host for 1 day or 2 sessions at convenient times

Adult patients asked to take part

- Simple questionnaire – self-administered with support from fieldwork team

- Simple clinical examination – by trained clinician in fieldwork team

- Extraction of some information from patient's FP17 (with their consent)

National collation, analysis and reporting at local authority level

How can LDNs help?

- Speak in support of the survey
- Encourage local committees to provide resources to incentivise practices
- Assist with forewarning of practices and reassurance of purpose
- Liaise with local fieldwork teams
- Other suggestions?

Summary

- Who we are and where are we?
 - Vision to delivery
 - Story so far
 - What's next?
-
- What else could we do?

Thank you